

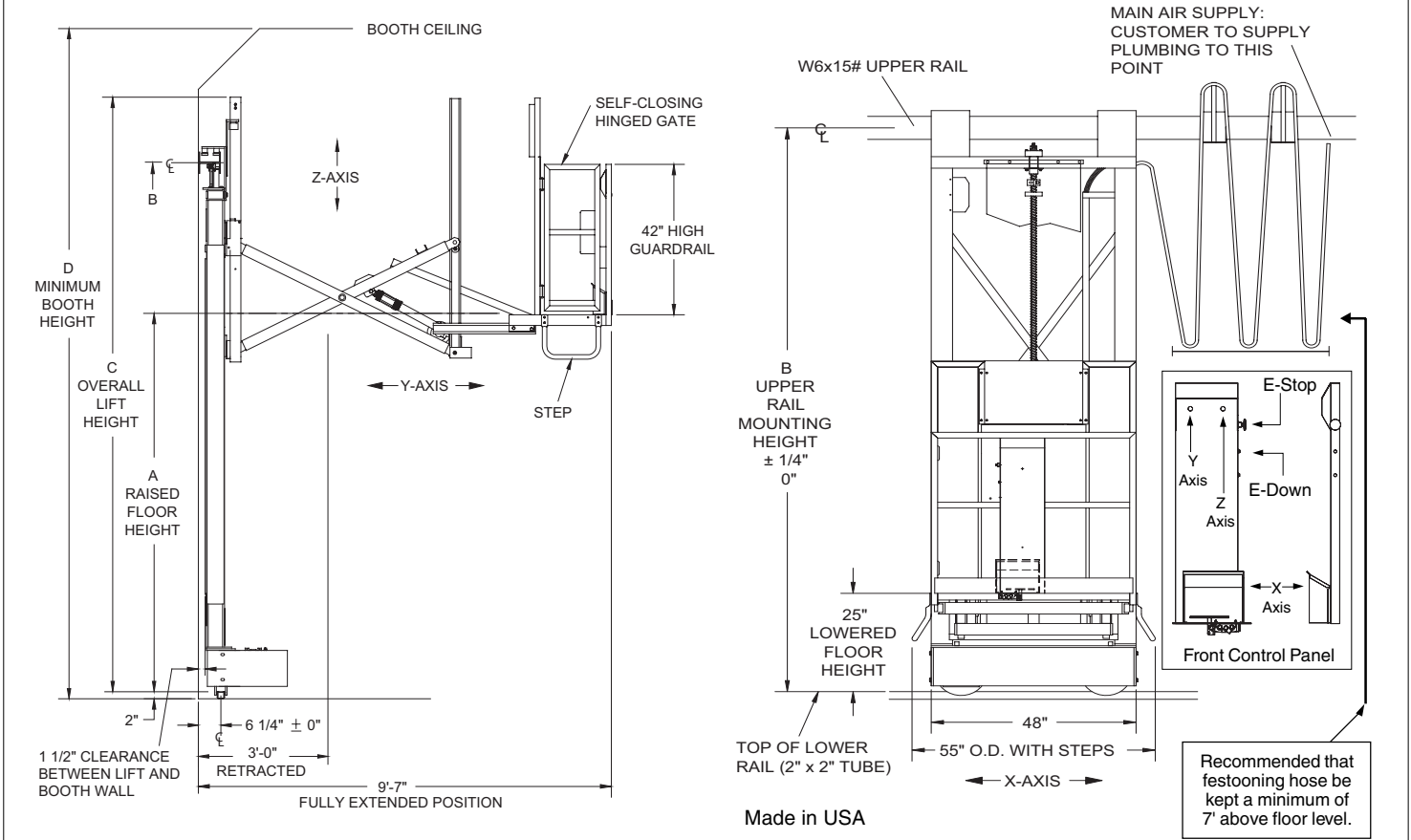
MULTI-AXIS MAST LIFTS

PRODUCT SPECIFICATIONS

SPACE REQUIRED FOR FESTOONING SYSTEM IN STORED POSITION		
Booth Length	Storage Space	Approx. # Carriers
0-50 Ft.	3 Ft.	4
50-80 Ft.	4 Ft.	6
80-120 Ft.	6 Ft.	9

If booth does not have enough length to allow access to ends of product, consult factory for options.

Standard ambient operating temperature range 60° F to 120° F. For non-standard temperature ranges, consult factory for design options.



STANDARD MODEL	A	B	C	D
LP2-810	8'-0"	11'-3"	13'-3"	15'-0"
LP2-910	9'-0"	12'-3"	14'-3"	16'-0"
LP2-1010	10'-0"	13'-3"	15'-3"	17'-0"
LP2-1110	11'-0"	14'-3"	16'-3"	18'-0"
LP2-1210	12'-0"	15'-3"	17'-3"	19'-0"
LP2-1310	13'-0"	16'-3"	18'-3"	20'-0"
LP2-1410	14'-0"	17'-3"	19'-3"	21'-0"
LP2-1510	15'-0"	18'-3"	20'-3"	22'-0"
LP2-1610	16'-0"	19'-3"	21'-3"	23'-0"
LP2-1710	17'-0"	20'-3"	22'-3"	24'-0"
LP2-1810	18'-0"	21'-3"	23'-3"	25'-0"
LP2-1910	19'-0"	22'-3"	24'-3"	26'-0"
LP2-2010	20'-0"	23'-3"	25'-3"	27'-0"

Dimensions are from top of lower rail.

INSTALLATION KIT (1 Required Per Lift)

Part Number: use LP2 [booth length] [booth height] with suffix IK

(i.e. LP26020-1K)

Change prefix LP2 to LP4 for 4th Axis Inside Descent Lift.

Kit includes:

- Upper and lower rails for mounting lift to booth walls with lower rail stops, and all mounting hardware.
- Festooning system with trolleys, main air supply hose and hose support grip. System is capable of carrying 2 additional lines, supplied by customer, up to 3/4" I.D. for breathing air and paint line or auxiliary air line for paint equipment.

OPTIONAL:

OPTION	P/N	OPTION	P/N
Upper Rail Spacer Kits	201-0974	5 Gallon paint pot kit	201-2350
4x4 Overspray cover	201-1024	Lower rail scraper kit	201-2251
Lower rail guides	201-0074	Front gate	Consult Factory
Auxiliary flex track	201-0075-	Receiver Steps	Left Side: 201-2256
Safety contact bumper system	202-0967 Right Side: 201-2255	

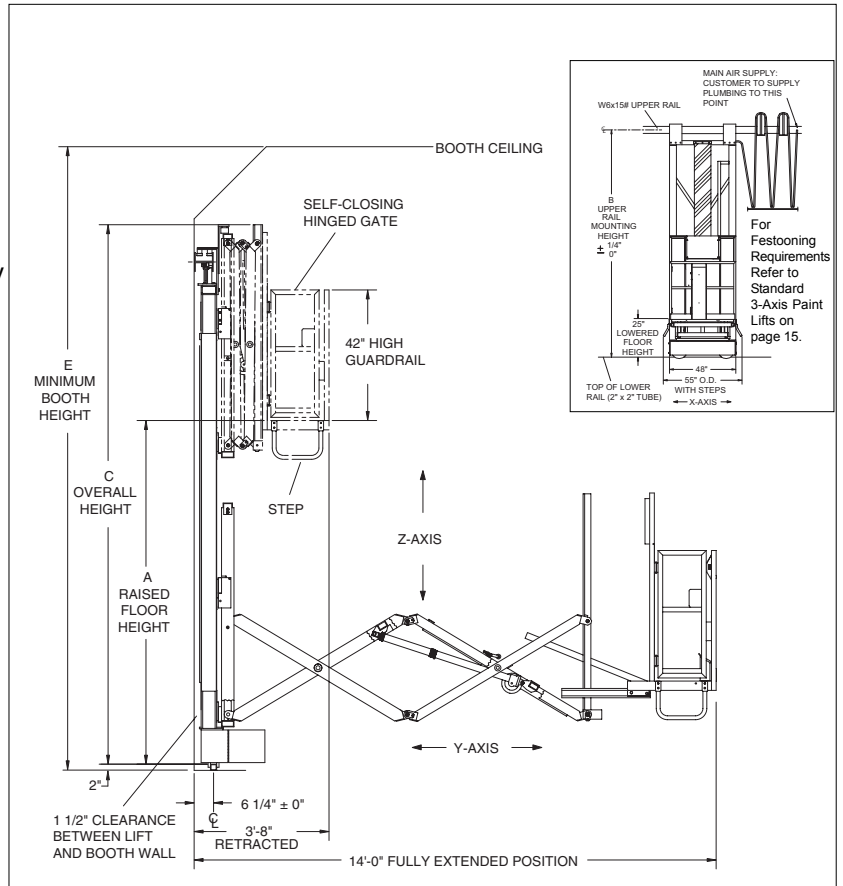
SEE PAGE 17 FOR OPTION DESCRIPTION

Note: Model selected should not exceed the inside height of booth.
 For calculation take the raised floor height (Dimension A) of the lift plus an additional 7' for personnel.
 • All models meet applicable OSHA/ANSI Standards as interpreted by LPI, Inc. •

MULTI-AXIS MAST LIFTS

EXTENDED REACH Y-AXIS

- Units are equipped with a double scissor mechanism to provide up to 10 ft. 4 in. of travel for a maximum 14 ft. reach from booth wall. Retracted dimension is 3'-8" from booth wall.
- Operator platform is 21" deep X 48" wide with a capacity of 300#.
- Allows one operator to paint entire end of product.



STANDARD MODEL	A	B	C	D	E	F
LP2-814	8'-0"	12'-3"	13'-3"	16'-3"	15'-0"	17'-0"
LP2-914	9'-0"	13'-3"	14'-3"	17'-3"	16'-0"	18'-0"
LP2-104	10'-0"	14'-3"	15'-3"	18'-3"	17'-0"	19'-0"
LP2-1114	11'-0"	15'-3"	16'-3"	19'-3"	18'-0"	20'-0"
LP2-1214	12'-0"	16'-3"	17'-3"	20'-3"	19'-0"	21'-0"
LP2-1314	13'-0"	17'-3"	18'-3"	21'-3"	20'-0"	22'-0"
LP2-1414	14'-0"	18'-3"	19'-3"	22'-3"	21'-0"	23'-0"
LP2-1514	15'-0"	19'-3"	20'-3"	23'-3"	22'-0"	24'-0"
LP2-1614*	16'-0"	20'-3"	21'-3"	24'-3"	23'-0"	25'-0"
LP2-1714*	17'-0"	21'-3"	22'-3"	25'-3"	24'-0"	26'-0"
LP2-1814*	18'-0"	22'-3"	23'-3"	26'-3"	25'-0"	27'-0"
LP2-1914*	19'-0"	23'-3"	24'-3"	27'-3"	26'-0"	28'-0"
LP2-2014*	20'-0"	24'-3"	25'-3"	28'-3"	27'-0"	29'-0"

Dimensions are from top of lower rail.
 Change prefix LP2 to LP4 for 4th Axis Inside Descent Lift.
 *All Extended Reach models over 16 ft. and all 4th Axis models have a 6' 8" base.

4TH AXIS INSIDE DESCENT

- This configuration allows for convenient painting of the inside of large products such as truck dump bodies or railroad cars.
- 4th axis movement is controlled by a rotary ballscrew and provides travel speeds of approximately 15 FPM.
- Equipped with same control and safety features as standard LP2 lifts.

See page 15 for Installation Kit Numbers.
 See Page 17 for Option Numbers & Descriptions.

Note: Model selected should not exceed the inside height of booth. For calculation take the raised floor height (Dimension A) of the lift plus an additional 7' for personnel.
 • All models meet applicable OSHA/ANSI Standards as interpreted by LPI, Inc. •

